



27 African history since the arrival of the Europeans has often been painful. For a long time Africans were viewed as inferior, and the natural resources of their continent were drawn off to the Great Powers.



26 The old wall maps show 'voyages of discovery' through unexplored Africa. But Africans already knew these places and had travelled through them long before!



25 Look for the oldest tooth in Africa!



24 The museum as it was 100 years ago.



23 Central Africa subsoil.

22 Scale models:
- the Congo River.
- the Inga Dam.



21 Look at the most beautiful wood samples close up.



20 Put on your Virtual Reality headsets and enjoy an immersive experience in the rainforest or the vibrant city of Kinshasa.



30 Charms to protect children.



You can listen to audio recordings throughout the entire exhibition hall.



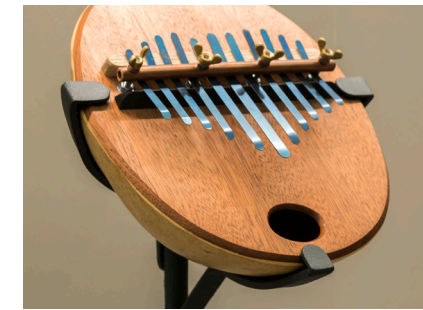
1 - Give your ear a workout and learn how tonal languages work.
- Learn Swahili.



2 What does the cow do?



3 Slit drum.



4 Kalimba.



You can touch these objects



Under the microscope



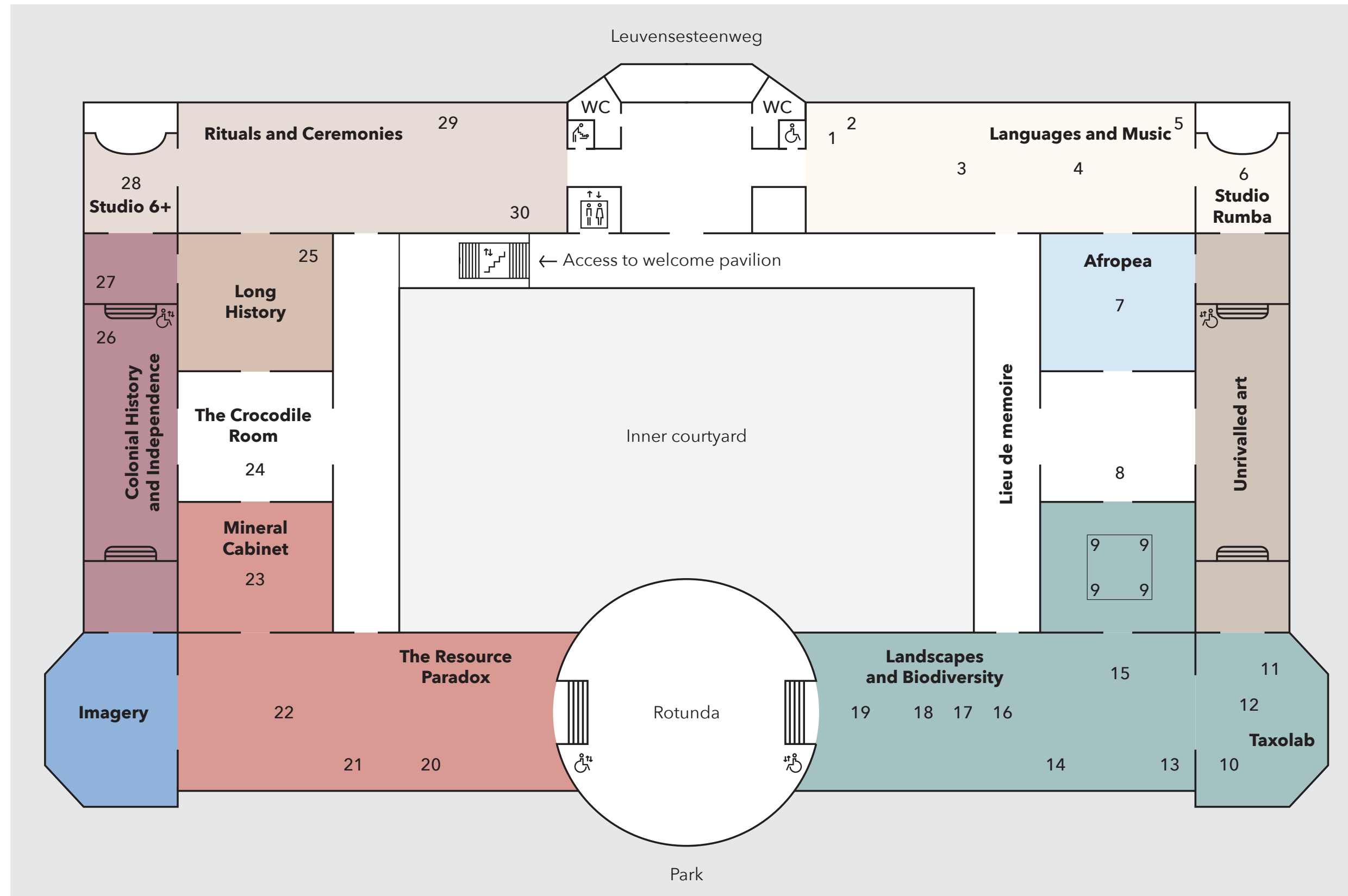
Interactive touchscreen



Audio excerpt



Please do not touch the animals on display. Only the pieces with a hands-on symbol can be handled.



5 Musical Structures.



6 Dance the rumba!



7 Afropea, meeting place and documentation centre where the story of the African diaspora is presented like a family album.



8 Moseka, the traffic robot.



9 Use a digital animation to look at the many animals who live in the different layers of the forest.



10 Aquarium.



11 What fly is this?



12 What fish is this?



13 Scale model of the Reef area.

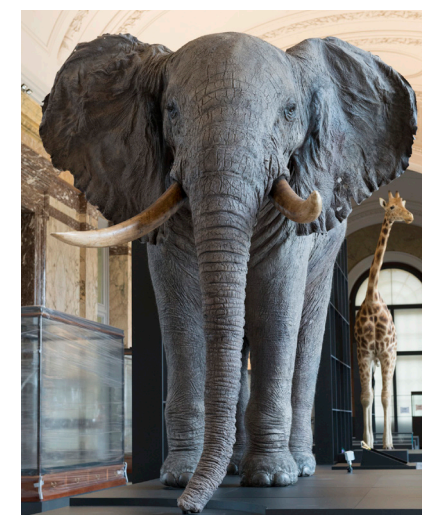


14 Under the microscope:

- Face to face with parasites.
- Face to face with the malaria mosquito.



15 See and feel the differences between the hands of a human, a chimpanzee, and a gorilla.



19 Elephant.



18 Feel the difference between the sharp, pointy teeth of carnivores and the flat teeth of herbivores.



16 Giraffe.



17 Ever wanted to touch the hide of an elephant or buffalo? Here (and only here!) is your chance.



Combine your museum visit with a walk or bike ride through the park's greenery and the adjacent Sonian Forest.

A short walk through the park takes you to the historic center of Tervuren, with various sights and a delightful children's playground.

- | | | | |
|--|---------------------|--|-------------------------------|
| | Visitor Centre | | Terminus Tram 44 |
| | Church | | Flemish Brabant bike network |
| | AfricaMuseum | | Hiking network Zuid-Dijleland |
| | Africa Palace | | Guest Rooms |
| | Horseshoe | | Hotel |
| | Saint Hubert Chapel | | Car Park |
| | Spanish House | | Underground parking garage |
| | Robiano castle | | |
| | Seven Star | | |
| | Playground | | |

We would like to thank our sponsors and partners:

Belspo · Directie-Generaal Ontwikkelingssamenwerking
Regie der Gebouwen · Nationale Loterij · Toerisme Vlaanderen · Visit Brussels

Ackermans & Van Haren · Adecco group · Amex · KBC · Nationale Bank van België
Puilateco Dewaey · Rotary Texaf · Umicore · ZEB

De Standaard · KLARA · Le Soir · RTBF

R.E.: Guido Gryseels, General Director

AFRICA
museum

www.africamuseum.be

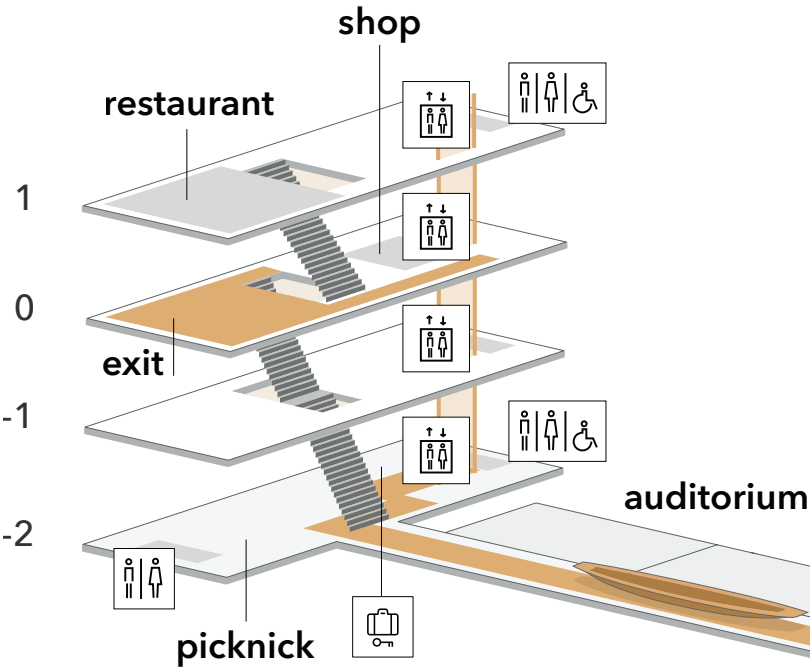
See, hear, touch, do.
Experience an unforgettable day
in the museum!

MAP

EN

WELCOME PAVILION

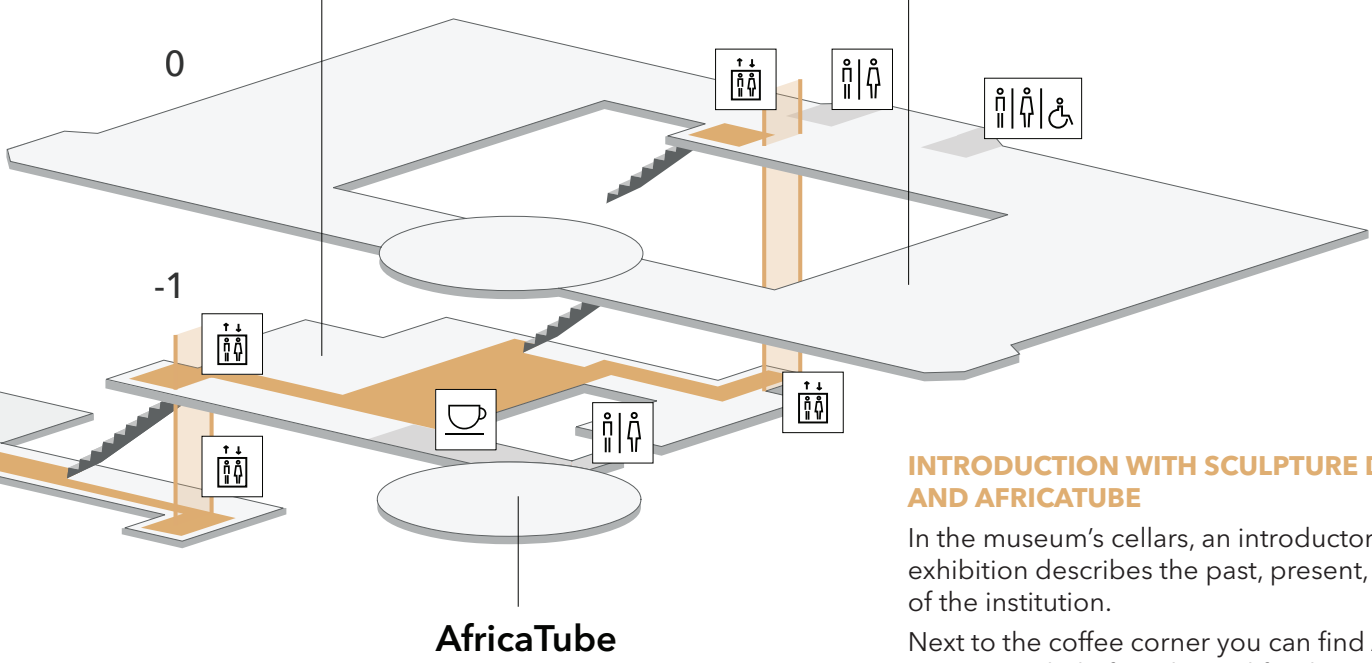
The new welcome pavilion is home to the reception desk, shop, restaurant, picnic area for children, and cloakrooms.



UNDERGROUND GALLERY

An underground gallery links the welcome pavilion to the old building. This gallery also houses an auditorium and the temporary exhibition halls.

Introduction with Sculpture Depot



THE PERMANENT EXHIBITION

The ground floor is devoted to the permanent exhibition. See the detailed floor map at the back.

INTRODUCTION WITH SCULPTURE DEPOT AND AFRICATUBE

In the museum's cellars, an introductory exhibition describes the past, present, and future of the institution.

Next to the coffee corner you can find AfricaTube, a space and platform by and for the youth, with a focus on contemporary digital Africa.